

OPAL-MD II PACS+CR

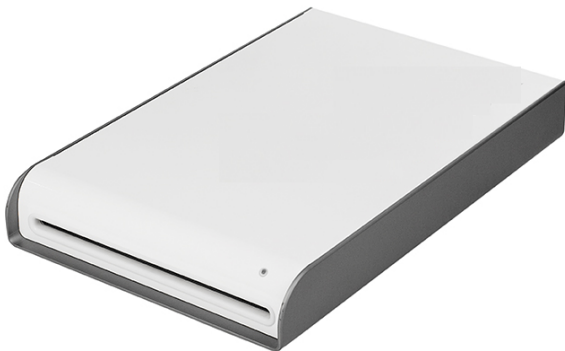


Go Digital with Opal-MD II

Viztek's complete Opal-MD II solution includes the ultra-small footprint Opal-CR II with the Opal-RAD Mini PACS, creating a complete product bundle. Small facilities no longer worry about receiving multiple products from various providers that do not communicate; the Opal-MD II bundle is streamlined for efficiency, providing your office with the best workflow CR+Mini PACS can offer. Enjoy the freedom to review images anywhere, from any PC, tablet, or phone.

System Includes

- Opal-Acquire viewing software
- Up to 70 plates per hour (14x17)
- Extremely light at 65lbs
- Tabletop or Wall Mount for Space Efficiency
- Small Footprint at: 4.6"x18.3"x27.7"
- Supports In-Room Viewing on All Major Tablets and Computers



2217 US Highway 70 East • Garner, NC 27529
Phone: 800.366.5343 • Fax: 919.772.2530
Email: info@viztek.net • www.viztek.net

Opal-MD Benefits

- Exam room viewing software
 - Freedom to view digital images in multiple exam rooms
- CD burning and paper print functions
- Auto-Routing of exams to multiple offsite radiologists
- Importing CDs from outside facilities
- Scan documents into exams
 - Requisition forms for Radiologist viewing
- Training and 24/7 support for hardware and software components
- Disaster Recovery plan to archive images automatically at Viztek's off-site location*
- Eliminate the cost associated with processing film

*off-site storage optional

Ask about our best CR/Mini PACS configuration that includes mOpal, the mobile anywhere viewer for use on any web-enabled mobile device!!